

USER'S MANUAL v.2

Settop CellXtrem



SETTOP

Rev. September 2016

Index

Index.....	2
Settop CellXtrem.....	3
Become familiar with the Settop CellXtrem	4
Battery.....	4
Coverage Level	4
Client LED (Rover)	4
LED Server (Base)	5
BASE port (Hirosho 4-pin connector).....	6
RADIO/ROVER port (Hirosho 4-pin connector)	6
SIM Card Slot.....	6
Become familiar with the Settop CellXtrem Software	7
Server Mode:.....	7
Client Mode:	11
Working modes.....	14
Pre-setup:.....	14
Server:	14
Client:.....	16
Mode exchange.....	17
Firmware Updates.....	18
ISTConnect.....	21
Server mode:.....	21

Settop CellXtrem

This guide provides a general overview of the basic characteristics and instructions for setting up the Settop CellXtrem device receiver and being able to operate with it in a simple way.

Step 1: charge the battery. Screw the GSM antenna and connect the batteries

Step 2: Set up the device as needed. Learn about the functionalities of the LEDS.

ADDITIONAL INFORMATION

Thank you for the trust you have invested in the SETTOP brand for carrying out your professional activities.

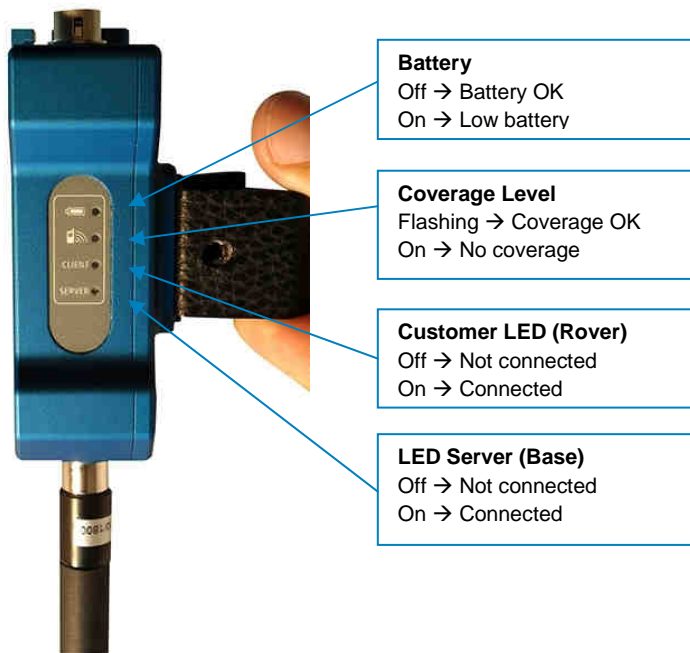
Remember that you must refer to our website www.settopsurvey.com for information on settings, quick guides and updates on our novelties.

The purchase of the equipment includes the warranty in accordance with the equipment supplied (labor and replacement of defective parts), starting on the date of delivery. The SETTOP Customer Service will help you with any problem related to your new device. You may contact us at info@settopsurvey.com

Likewise, purchasing the equipment includes the Customer Service (during the warranty period), starting on the date of delivery. The SETTOP Customer Service will help you with any doubt regarding the handling of the equipment, its setting and its start-up. You may contact us at info@settopsurvey.com

Once the warranty has expired, you may opt for the **annual warranty extensions**. Do not wait for the expiration of the warranty to contract the extension.

Become familiar with the Settop CellXtrem



Battery

LED Off → Battery or external power supply OK.

LED On → Battery or external power supply at low voltage level

Coverage Level

When the **LED** is **on** continuously, this means we have no coverage or no SIM.

When we have SIM and coverage, then the **LED** will indicate the coverage level (which will vary from 1 to 4) by **flashing**

Client LED (Rover)

This LED indicates 2 things:

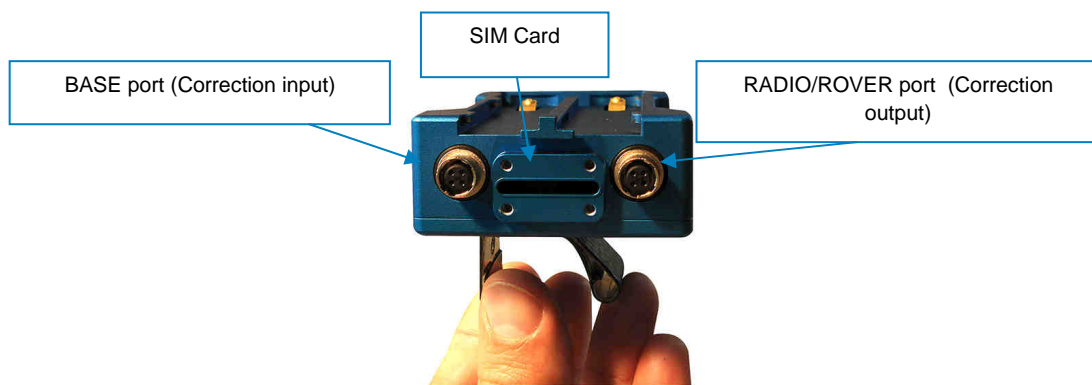
- At the moment of turning on the equipment, this LED flashes 5 times if the equipment has been previously set up as rover, whether it be in a point-to-point connection, connected to an NTRIP base.

- The LED glows continuously when the connection is made point-to-point to another **Settop CellXtrem**, when the connection is made to an NTRIP base or when an NTRIP connection is made by means of a GPS receiver.

LED Server (Base)

As in the Client LED point, this LED indicates 2 things:

- It informs us by means of 5 flashes at the moment the equipment is turned on that it is set up in Server mode.
- Once the equipment has been started, this LED will light up if an equipment has been connected point-to-point to the **Settop CellXtrem**.



TIP:



IMPORTANT:

Connect the field controller to the Radio/Rover COM Port (only required for configuration purposes)

BASE port (Hirosho 4-pin connector)

This connector is only used in Base (or Server mode) and it is the corrector through which the base corrections enter.

RADIO/ROVER port (Hirosho 4-pin connector)

This connector is used in Base and Rover (Server and Client) mode. In either case, it is the port through which the equipment is set up.

In the Base mode, we also have the data that are injected through the port in the previous point. In Rover mode, we have the corrections from the NTRIP base.

SIM Card Slot

The SIM card is entered. The PIN of the SIM card must be disabled.

TIP:

How introduce SIM Card? Not use a screwdriver. Use a coin or similar



If you Insert or Remove the SIM card, ensure the CellXtrem is off

Become familiar with the Settop CellXtrem Software

We execute the setup Application of the Settop CellXtrem installed in the field controller.



Connect the field controller through the RS232 setup cable to Radio/Rover PORT of the Settop CellXtrem.

The device will automatically identify the CellXtrem and display the current setup of the device on screen:

Server Mode:



On the screen, we can see that the equipment is a Settop CellXtrem next to the serial number (SN), that it is set up as “server”, and we can also see the IP and port of this server.


We can also see a graphic display of the coverage level. The color will indicate the coverage level

(blue 100%, green 1-75%, grey 0%)




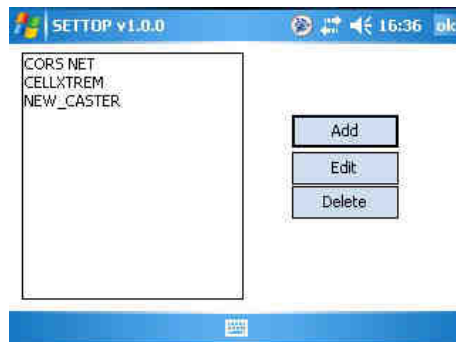
On the lower bar, we can find a series of buttons for making changes to the current configuration of the device.



 **Casters list:** By pressing on the button, we shall see the list of all the available servers set up, along with the user and password.



By pressing on button , one can edit the list, deleting or adding new servers.



To add a server, one must press on **“Add”**

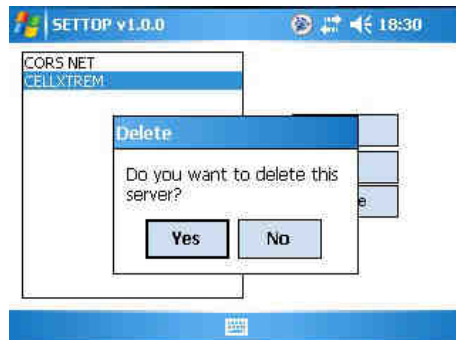


The fields required for connection are entered: the Name, IP address, port, user and password if needed.

If the “CellXtrem” box is ticked, the option of entering the user and password is disabled and the port is automatically blocked at 2101. This option must be enabled when the RTK corrections of the base come from a Settop CellXtrem.



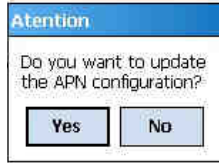
To delete a server, press on “Delete”



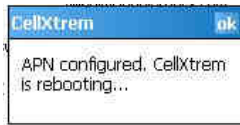
Operator: If the button is pressed, the setup parameters of the telephone company will appear. These parameters are directly supplied by the company of every country.




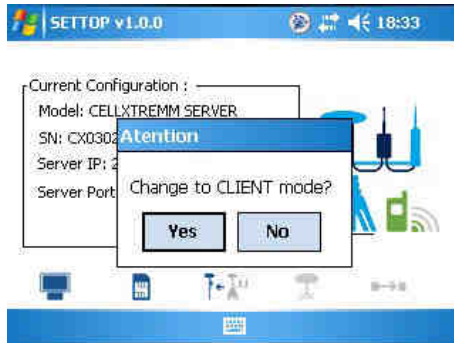
After the setting up, when “OK” is pressed, a pop-up will appear for updating the parameters of the company.



Following the confirmation, the Settop CellXtrem device must be restarted (automatically).



 **Server to Client:** Pressing on the button will change the configuration from “Server” mode (RTK correction server, base) to “Client” Mode (client in RTK correction reception, mobile)



Client Mode:




If the Settop CellXtrem is working in Rover mode, the **Automatic Connection** is in ON, the equipment (after starting) will proceed to connect to the last base or the CellXtrem that was connected. Thus, we will not need to set up the CellXtrem with the software if we always work in the same conditions (the same NTRIP base, zone, etc.)

It will only be necessary to power the equipment and – if there is no problem with the SIM, coverage, NTRIP, etc. – the equipment will automatically connect.


On the screen, we can see the current configuration next to the serial number (SN), the name of the last server used and the user name in the event of authentication being required. In those cases of connection to a Settop CellXtrem, the information provided is the IP and the port of the CellXtrem.

Moreover, we can graphically see the coverage level. The color will indicate the coverage level


(blue 100%, green 1-75%, grey 0%) 

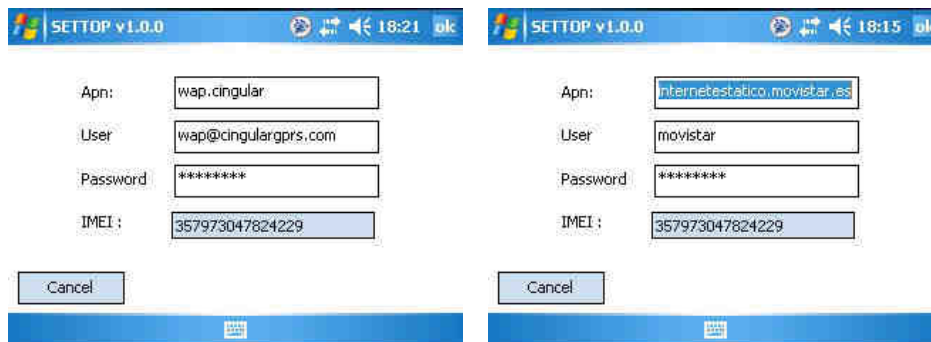
On the lower bar, we can see a series of buttons with which we can carry out changes to the current set up of the device.




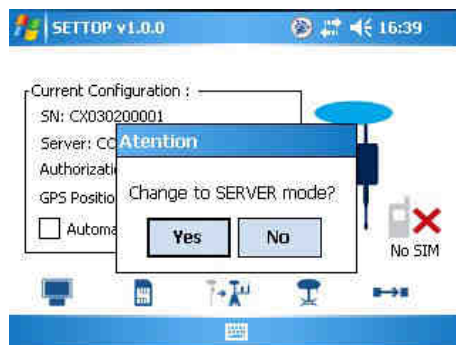
 **Casters list:** By pressing on the button, we can see the list of all of the available servers set up, along with the user and password. (For more information, see page 4)




 **Operator:** If the button is pressed, the setup parameters of the telephone company appear. These parameters are directly supplied by the company. (For more information, see page 5)

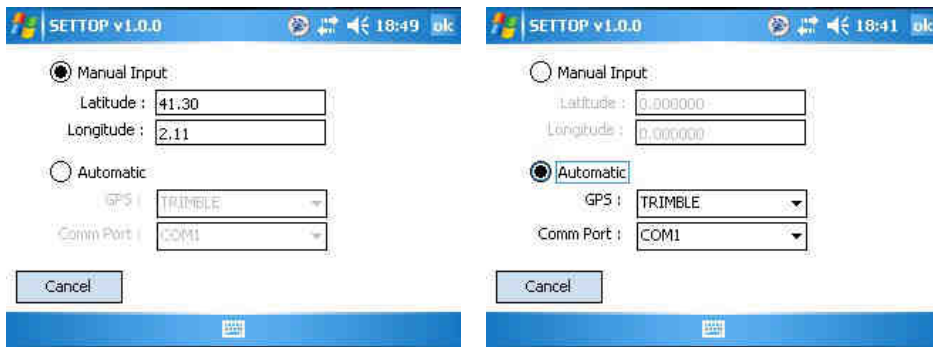



 **Server to Client:** Pressing on the button will change the configuration from “Client” Mode (client in RTK correction reception, mobile) to “Server” mode (RTK correction server, base)



 **GPS:** By pressing on the *GPS* button, one can send from one position (NMEA GGA channel) to the server for the calculation of a virtual base.


This position can be *Manual* (entering approximately a Latitude and a Longitude of the zone we are in) or it can be chosen with *Automatic* by selecting a GPS brand on the list (TRIMBLE, LEICA, TOPCON, UNKNOWN) and the communications port of the GPS




 **Connection / Disconnection:** If you press on the Disconnection button, the existing connection ends, making it possible to change the current configuration.

Working modes

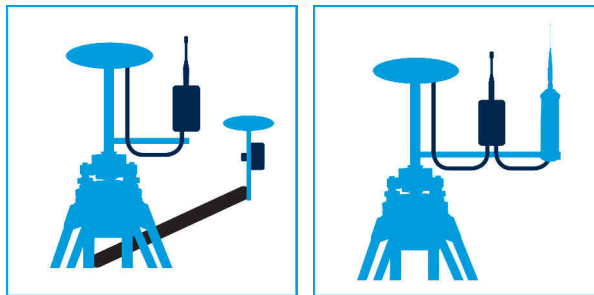
Pre-setup:

 Prior to field work, one can perform a previous setup of the device. One can edit, create or eliminate the casters list, as well as users and passwords (see page 4).

 One can also edit the APN of the operator in the event of changing the SIM card of the Settop CellXtrem device (see page 5)

Server:

The base transmits the corrections exclusively via Internet or via both Internet and external radio at the same time.



We execute the setup application of the Settop CellXtrem installed in the field controller. Connect the field controller via the RS232 setup cable to Radio/Rover PORT of the Settop CellXtrem.

The software will automatically identify the CellXtrem

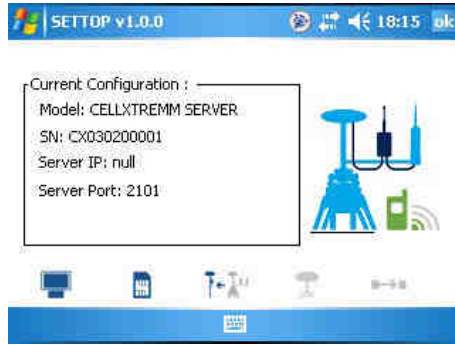
For use as *Server*, it is advisable to use an SIM card with an assigned static IP.

The connection makes it possible to verify the coverage level in the work zone.

NB: Working in *Server* mode requires no additional setup.

Using the following correction formats is recommended: RTCM3.x o CMR+.

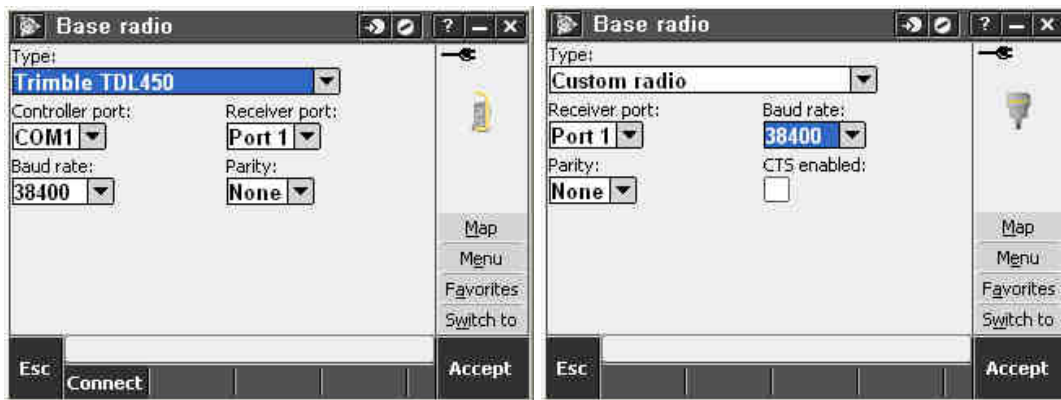
RTCM2.3 with activated GLONASS is not recommended.



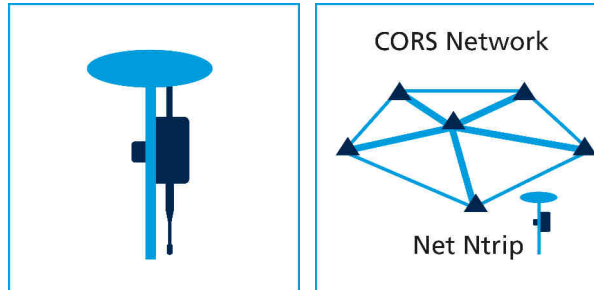
Pressing on OK will allow us to exit the application and set up the GPS receiver in basic mode in the usual manner.

OBSERVATION: If you are working with a GPS receiver with an external radio, select Custom Radio for working with the Settop CellXtrem. Assign the correct port (it will depend where is connected), the speed at 38400bps and the parity at None

If working with an external radio, maintain the current configuration of the equipment.



Client:



We execute the setup of the Settop CellXtrem installed in the field controller. Connect the field controller via the RS232 setup cable to Radio/Rover PORT of the Settop CellXtrem.

The software will automatically identify the CellXtrem

If the Settop CellXtrem is working in Rover mode, the **Automatic Connection** is in ON, the equipment (after starting) will proceed to connect to the last base or the CellXtrem that was connected. Thus, we will not need to set up the CellXtrem with the software if we always work in the same conditions (the same NTRIP base, zone, etc.)

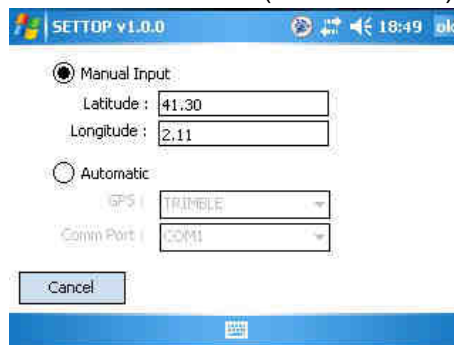
It will only be necessary to power the equipment and – if there is no problem with the SIM, coverage, NTRIP, etc. – the equipment will automatically connect.

Otherwise, the configuration required will be minimal:

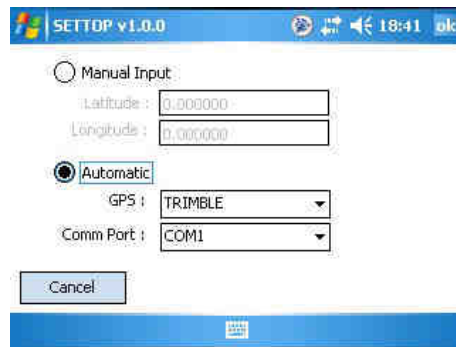
If we need to connect to a Virtual Network, requiring our approximate location, we can press on



and select Manual location to enter a latitude (+ → N / - →S) and a longitude (+ → E / - →O)



It is also possible to select in Automatic, so as to send an NMEA (GGA) command received from the GPS, by previously selecting the receiver brand on the list and the correct communications port.

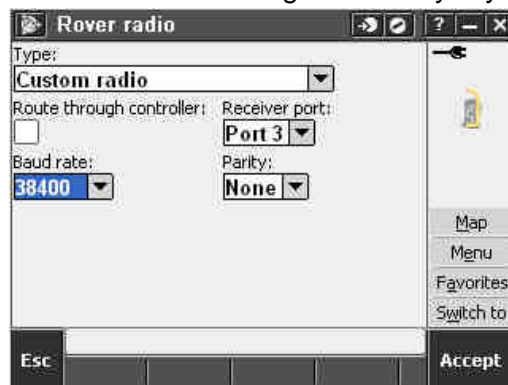


➡ Start the connection of the Settop CellXtrem device.

Pressing on OK will allow us to exit the application and set up the GPS receiver in basic mode in the usual manner.

OBSERVATION: While setting up the style, select Custom Radio for working with the Settop CellXtrem. Assign the correct port (it will depend where is connected), the speed at 38400bps and the parity at None

Note for Trimble user's: Trimble Access → Settings → Survey Styles → (RTK) → Rover radio.



Mode exchange

One can change from working in Server mode to Client mode or vice versa by pressing on change button.

↔ If we are in *Server mode* and want to change to *Client mode*

↔ If we are in *Client mode* and want to change to *Server mode*


NB: If in Client mode, one must cut connection, ↔ before performing the change.

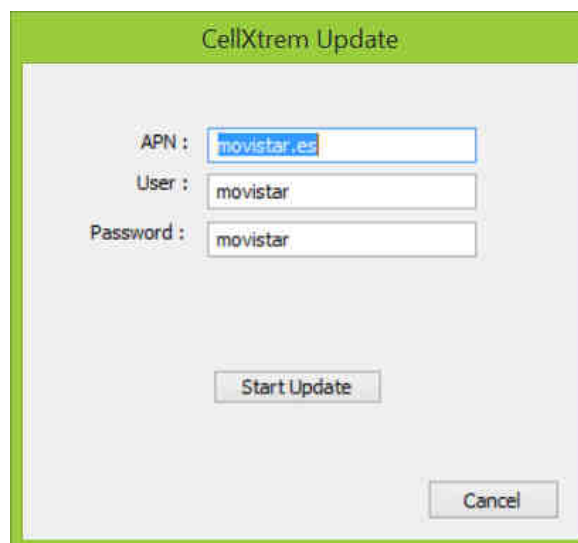
Firmware Updates

Update firmware step by step.

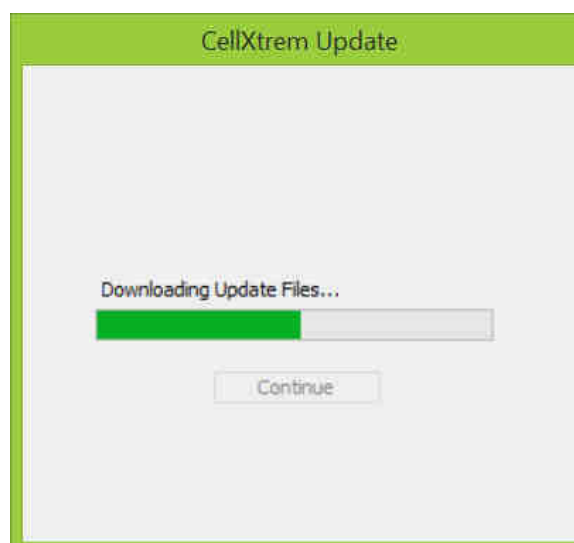
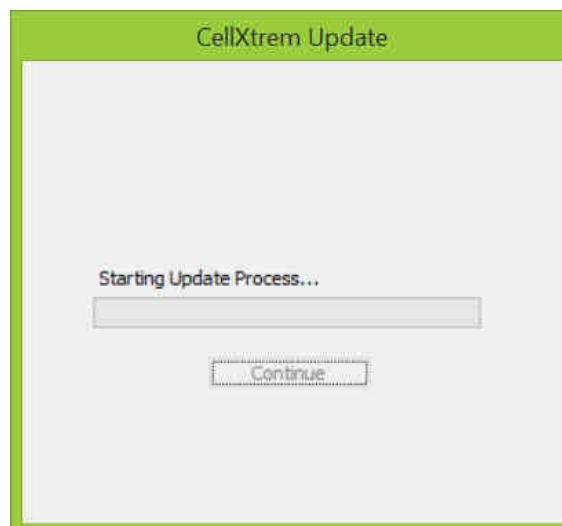
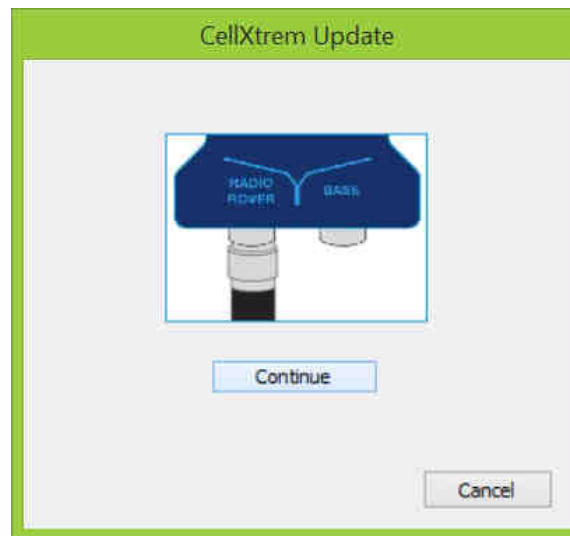
- 1- Execute the Settop CellXtrem application for PC application or Windows mobile.

In the Settop CellXtrem device, make sure you have inserted SIM card, verify that the GSM antenna is connected and that there is internet coverage in the area.

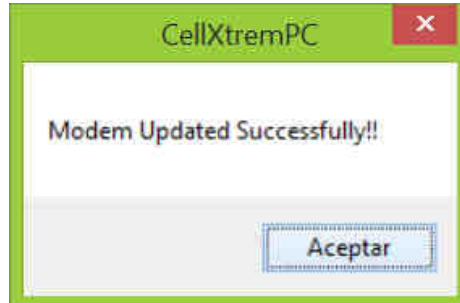
- 2- Connect the Settop CellXtrem in the COM Radio Rover and click on the update icon  while the application is starting



- 3- Click on *Start Update* and follow the messages until it pop up a message that has been updated successfully.



- 4- The device will reboot when it has completed the upgrade process




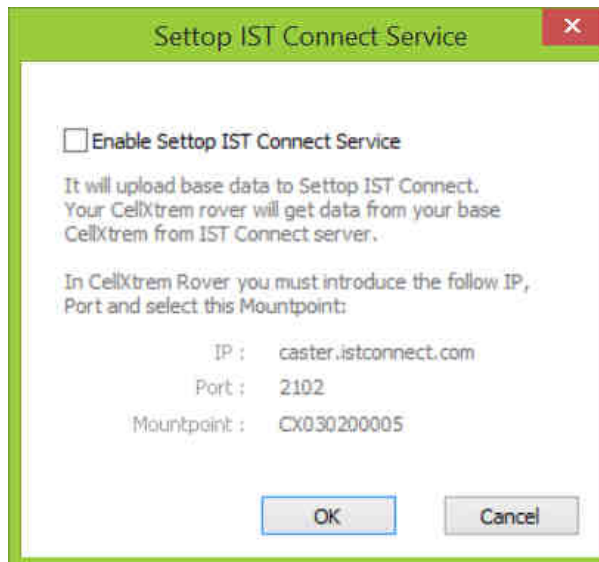
ISTConnect

Configure

Server mode:

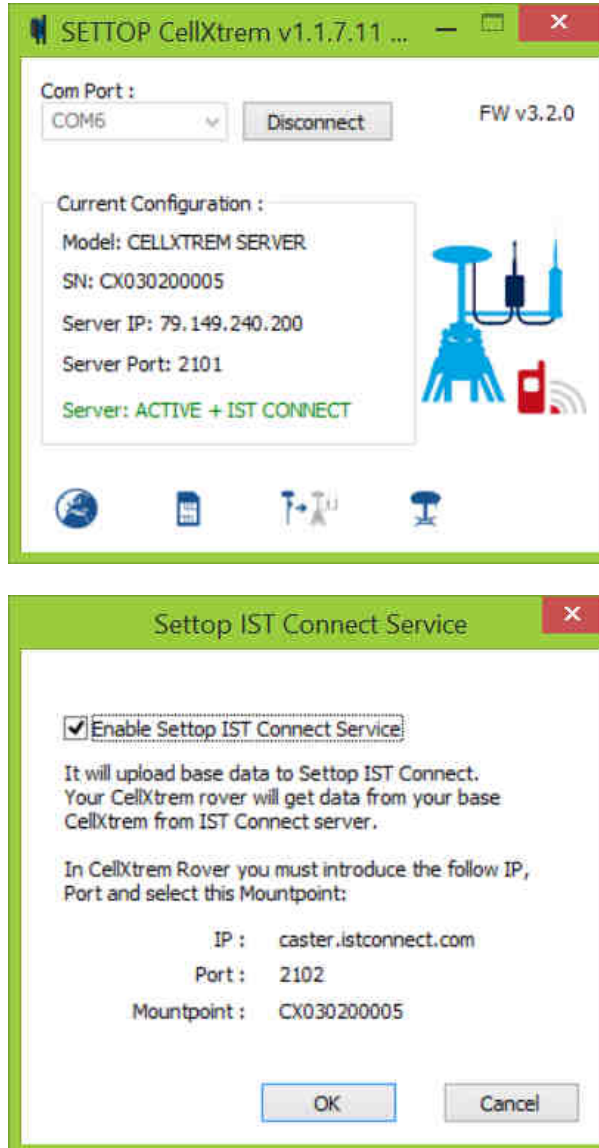


Press the icon 



Checkbox to Enable Settop IST Connect Service

Server led



IP: 52.16.222.208 or URL: caster.istconnect.com

Port:2102

Mountpoint: Select yor serial number Settop Cellxtrem.

User and Password will be created by Settop Survey.

If you want to receive more information about this update, please contact Settop Survey on (+34) 93 700 44 66 or by email at support@settopsurvey.com